

## Dummy Card Removal

---

1. Push dummy card (A) in to release it from the spring latch (Figure 3-3).
2. Remove dummy card (A) (Figure 3-3).



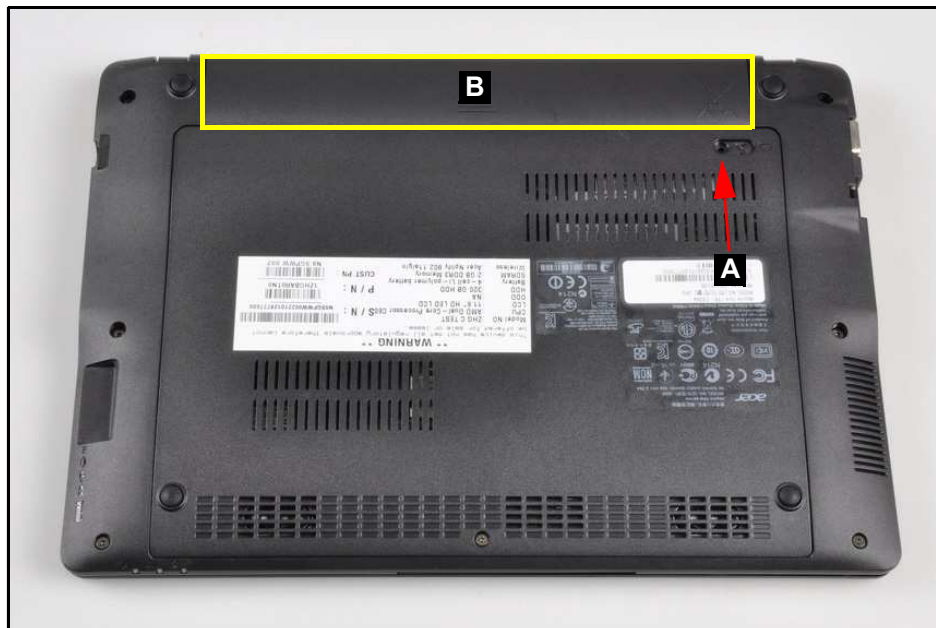
---

**Figure 3-3. Dummy Card**

## Battery Pack Removal

---

1. Place computer on flat surface, battery side is up.
2. Use the screwdriver to push and hold the battery release latch (A) to unlock position ([Figure 3-4](#)). The battery pack will automatically release from the battery bay.
3. Slide the battery pack (B) out of the battery bay ([Figure 3-4](#)).



**Figure 3-4. Battery**

**+ IMPORTANT:**

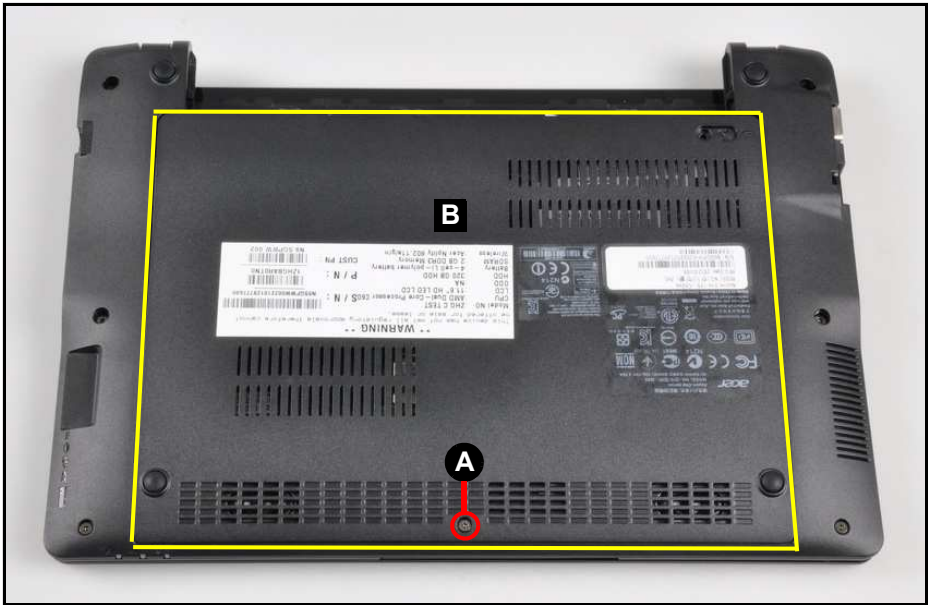
Follow local regulations for battery (B) disposal ([Figure 3-4](#)).

# Base Door Removal

**Prerequisite:**

[Battery Pack Removal](#)

- 1. Remove one (1) screw (A) securing the base door in place ([Figure 3-5](#)).



**Figure 3-5. Base Door**

- 2. Slide the base door (B) toward the front of the system and lift away from the system ([Figure 3-5](#)).

ID	Size	Quantity	Screw Type
A	M2.0*6.0	1	

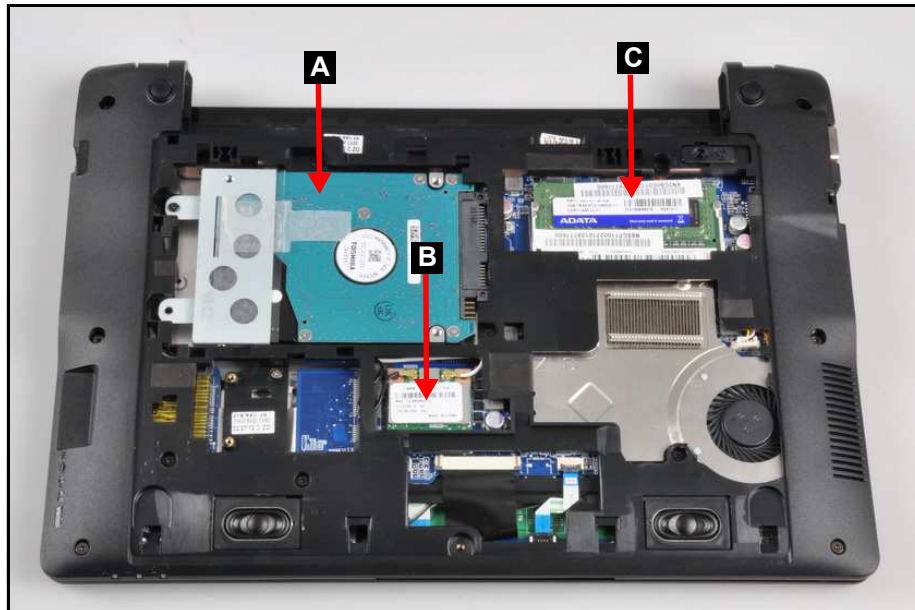
# WLAN (Wireless Local Area Network) Module Removal

---

## Prerequisite:

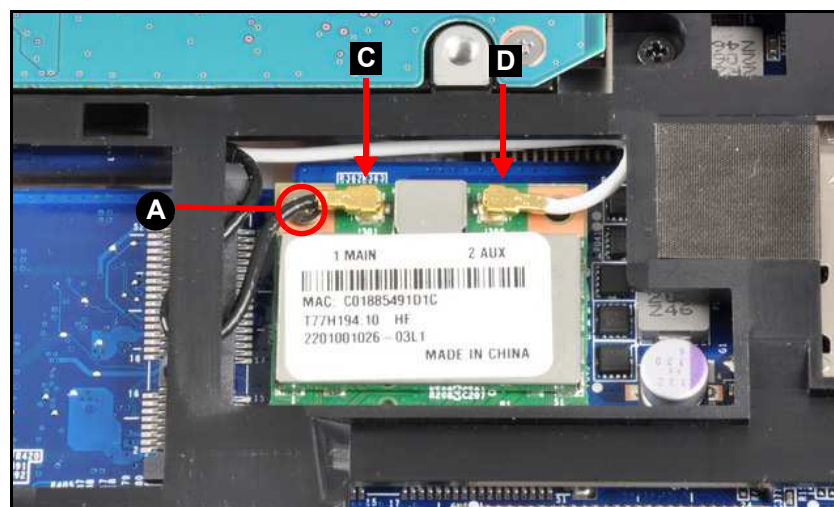
### [Base Door Removal](#)

1. Find WLAN module (B) on the base assembly. Refer to [Figure 3-6](#).



**Figure 3-6. Component Location**

2. Disconnect main (C) and auxiliary (D) antennas connected to WLAN card ([Figure 3-7](#)).
3. Remove one (1) screw (A) securing the WLAN module in place ([Figure 3-7](#)).




**Figure 3-7. WLAN Module**

4. Remove WLAN module from mainboard connector (E) (Figure 3-8).



Figure 3-8. WLAN Module

ID	Size	Quantity	Screw Type
A	M2.0*3.0	1	



# DIMM (Dual In-line Memory Module) Module Removal

---

## Prerequisite:

### Base Door Removal

1. Find DIMM (C) on the base assembly (Figure 3-6).
2. Push DIMM clips (A) outwards (Figure 3-9).

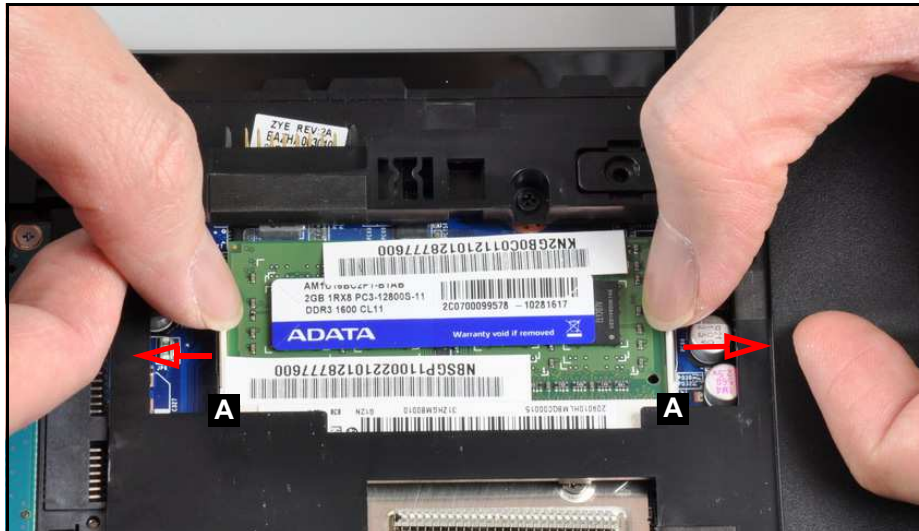


Figure 3-9. DIMM Modules

3. Remove DIMM from mainboard connector (B) (Figure 3-10).

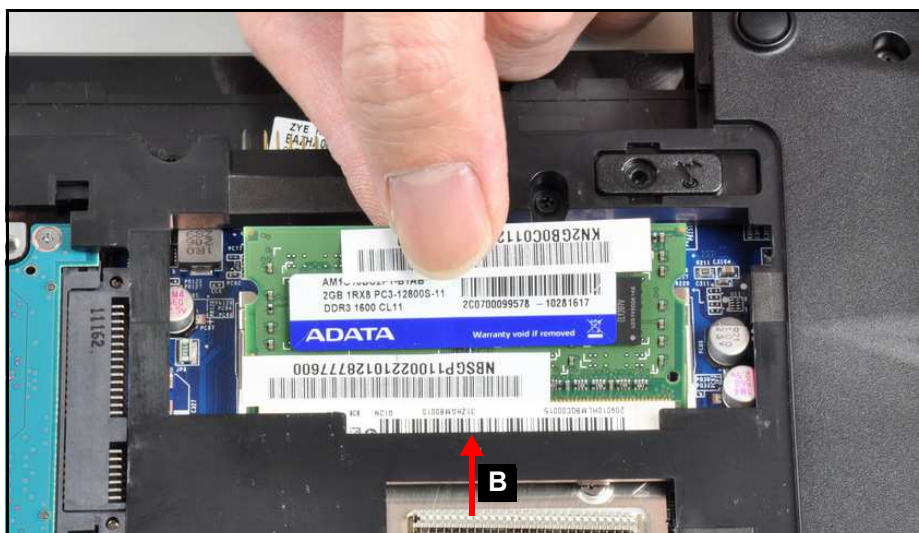


Figure 3-10. DIMM Modules

4. Repeat steps 2 and 3 for remaining modules.

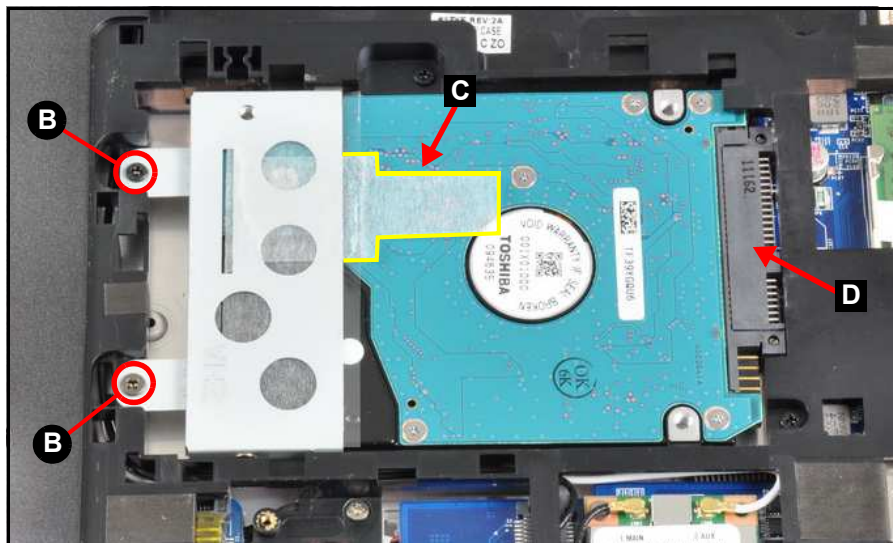
## HDD (Hard Disk Drive) Module Removal

---

### Prerequisite:

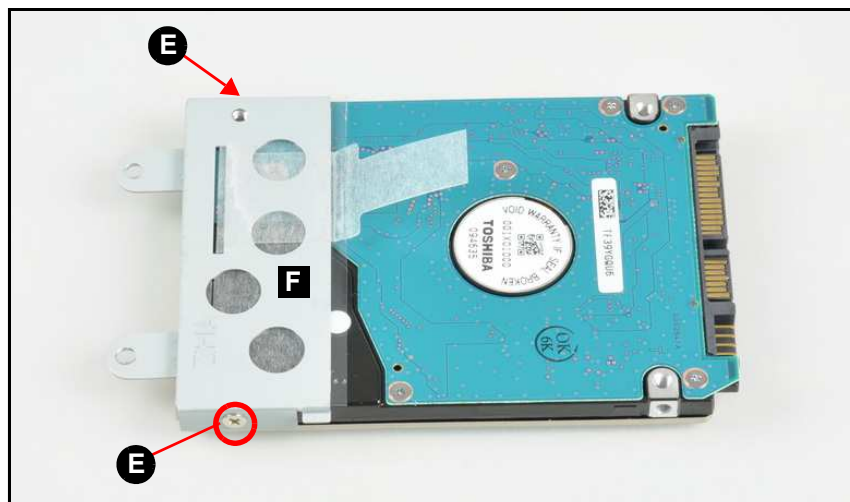
#### Base Door Removal

1. Find HDD module (A) on the base assembly as shown in [Figure 3-6](#).
2. Remove two (2) screws (B) securing the HDD module in place ([Figure 3-11](#)).
3. Pull the tab (C) to release HDD module from mainboard connector (D). Refer to [Figure 3-11](#).



**Figure 3-11. HDD Module**

4. Remove two (2) screws (E) from HDD bracket (F) ([Figure 3-12](#)).




**Figure 3-12. HDD Module**

5. Remove HDD bracket (F) from HDD ([Figure 3-13](#)).



**Figure 3-13. HDD Module**

ID	Size	Quantity	Screw Type
B	M2.0*7.5	2	
E	M3.0*3.5 NI	2	